



**HEAVY-DUTY  
FRONT AND  
REAR MOUNT  
FLAIL  
MOWER**

**KM Series**



**FRONT AND REAR WITHOUT TRANSFORMATION**

The heavy duty KM front- and rear mount flail toppler is fitted with an extra strong frame and universal headstock. Its versatility in combination with its extreme robust construction makes the KM an ideal and reliable choice for professional farmers, councils, leasers, contractors and other mixed tractor fleet owners.

The standard configuration includes a hydraulic side-shift of 57 cm = 19" and a unique gearbox, that accepts both RH and LH rotation, with integrated overrunning clutch.

*Universal heavy duty flail mowers.  
Ready for the toughest job around your farm.*

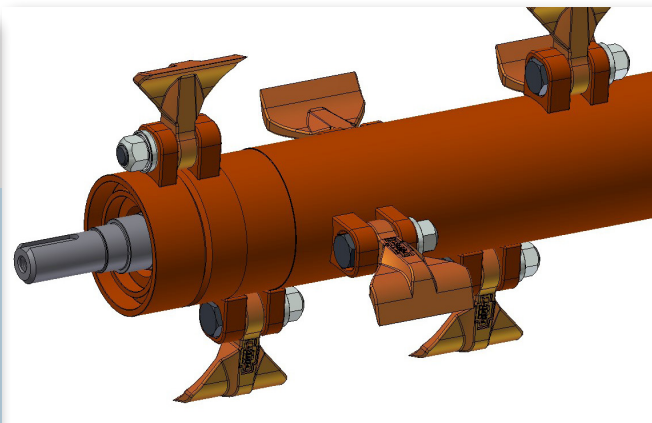


## KM SERIES

# Front and rear mount flail mowers



To protect the bearings of the large diameter rear roller, the bearings are fitted with unique covers to prevent humidity, dust and mud from entering.



The 0,9 kg (2 lbs) special flails with single cutting edges ensure clean and finest cut of grass, rushes, reed stems, pruning etc. up to 3 cm. They are fitted to the large diameter double balanced rotor with heavy 20 mm bolts and replaceable steel bushes. 2,2 kg universal flails, or Combi-flails are optional available.

### SECURE DRIVE SYSTEM

V-belts are kept at the right tension by springloaded automatic belt tensioners. This indirect flexible drive ensures maximum security and requires minimum maintenance.

### EXTRA'S

- 2,2 kg universal flails
- 2,7 kg Combi-flails
- Pro-fix flail mounting
- Wearing plates



Technical specifications	KM-220	KM-245	KM-270	KM-300
Working width (cm/ inch)	220/ 7'2"	245/ 8'0"	270/ 8'9"	300/ 9'8"
Speed:				
- PTO shaft (rpm)	1000	1000	1000	1000
- flail shaft (rpm)	2200	2200	2200	2200
Required min. power (kW/ HP)	35/ 48	40/ 55	48/ 65	55/ 75
Flails 0.9/ 2.2 (kg) - 1.98/ 4.85 (lb)	22/ 12	24/ 16	28/ 16	32/ 18
Total width (cm/ inch)	247/ 8'1"	272/ 8'9"	297/ 9'7"	327/ 10'7"
Tractor coupling system (cat.)	II	II	II	II
Weight (kg/ lb)	1000/ 2205	1030/ 2271	1120/ 2469	1200/ 2646
Hydraulic offset from tractor centre:				
- minimum (cm/ inch)	91/ 3'0"	116/ 3'8"	141/ 4'6"	123/ 4'0"
- maximum (cm/ inch)	148/ 4'9"	173/ 5'7"	198/ 6'5"	180/ 5'9"

As our policy is one of continuous improvement, we reserve the right to change the specification or to modify the design without prior notice



Van Wamel B.V.

📍 Van Wamel B.V.  
Energieweg 1, 6658 AE  
Beneden Leeuwen  
The Netherlands

☎ +31 (0) 487 59 29 44  
☎ +31 (0) 487 59 29 44  
@ www.vanwamel.nl  
🌐 perfect@vanwamel.nl

Your PERFECT dealer